

Hoval TransShare

for efficient energy distribution.

Straightforward
Fast
Precise

Factbook



Hoval

Hoval TransShare

The energy distributor sets new standards.

Standards make life easier.

The Europool pallet is a showcase example of this. Born out of an idea at the beginning of the 1960s, it has gone from strength to strength. Today, it facilitates the transport of goods of all kinds. At the latest since its appearance as a million-dollar question in a TV show in 2020, almost everyone knows it. Almost as universally applicable as the Europool pallet are the three new standard designs of the TransShare heat distributor that Hoval is introducing in 2021. Due to the standard design, the matching energy distributor is delivered to the construction site in only 3 weeks. The beginning of a success story?!





Standard design for TransShare	4
Maximum standard with minimum configuration.	

Energy distribution in the system	10
Efficient and modular.	

Hoval TransShare	14
The energy distributor.	

More time for your core business	16
Satisfied customers with ControlBox.	

Order fulfilment	18
Tools and forms.	

Technical facts	20
Selection and dimensions.	

Already in use	26
Versatile applications.	

A glance to the right and left	30
The market in focus.	

Standard design for TransShare

Maximum standard with minimum configuration.

2016



The TransShare energy distributor is presented for the first time. 100% configurable.

2021



Heating circuits

Choice of number and design

A heating circuit is a heating armature group with pump and all necessary fittings.

Control

TopTronic® E or TopTronic® E-FW incl. sensor, wiring and control panel.

Thermal insulation

(not shown)

Supply / distributor / collector

Frame

Application TransShare

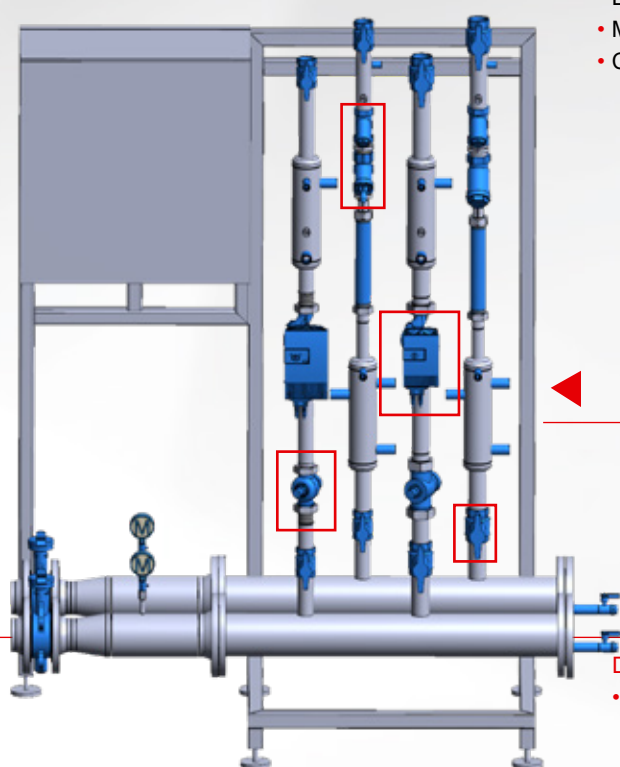
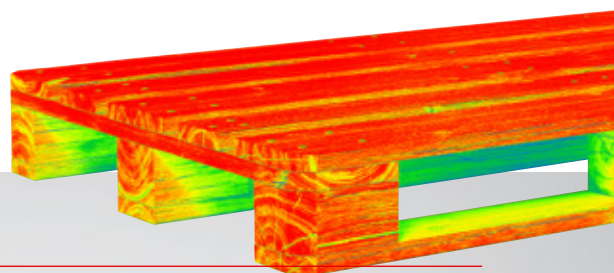
Number of heating circuits	≥ 4
Flow rate heating circuit	$\geq 3.4 \text{ m}^3/\text{h}$
Thermal insulation	50% or 100% according to EnEV
Electrical system	Complete with control panel and wiring

Each TransShare distributor consists of one manifold for flow and one manifold for return. Charging circuits and heating circuits are built onto these manifolds, which differ in their function and thus also in their equipment. Create your individual distributor. However, to simplify planning and speed up delivery, there are three standard designs to choose from. Basis, Comfort, Premium.

Hoval TransShare energy distributor

Ready-to-install unit delivered in 3 weeks.

Ready-to-collect hydraulics | Electrically wired up | Incl. thermal insulation



Designs

- Direct heating circuit
- Mixer heating circuit
- Charging circuit

each in the three standard designs

Basis

or

Comfort

or

Premium

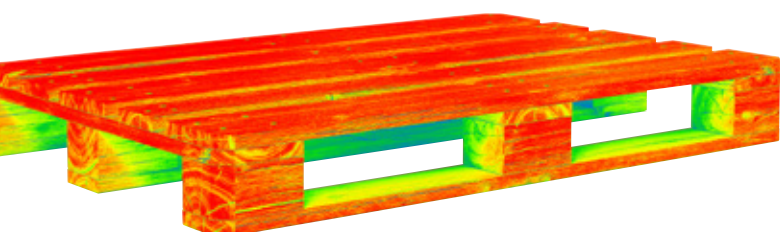
Designs

- A flow distributor and a return collector as a pipe distributor

Heating circuits

Designs and equipment.

For the TransShare energy distributor, different heating circuits can be built onto the heating circuit distributor. An individual energy distributor can be assembled depending on the selected standard design.



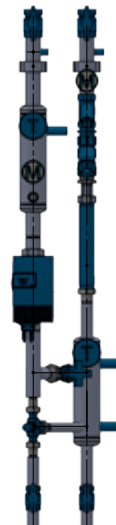
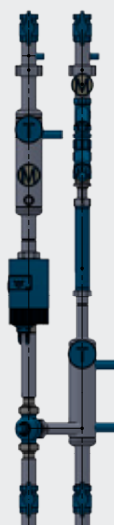
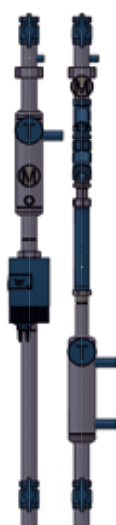
VERSIONS of the heating circuits in standard design

Direct charging heating
circuit

Direct heating circuit

Mixer heating circuit

Mixer heating circuit dB
(with direct admixture)

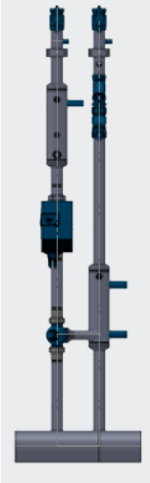


All heating circuits shown in
standard design **Premium**.

The STANDARD DESIGN determines the equipment of the heating circuits

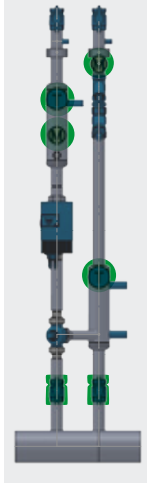
Mixer heating circuit

Basis



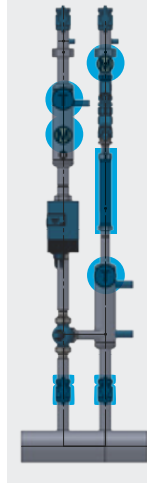
1. Shut-off valve
2. Thermometer
3. Non-return valve
4. Strainer

Comfort



- +
5. Thermometer (ø 63 mm)
 6. Pressure gauge (ø 63 mm)
 7. Filling and drainage

Premium



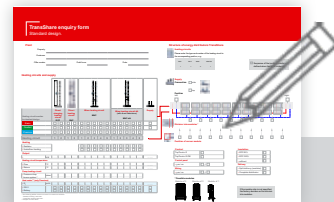
- +
5. Thermometer (ø 100 mm)
 6. Pressure gauge (ø 100 mm)
 7. Filling and drainage
 8. Heat meter adapter
 9. Flow control valve

Standard design for
DN 25 | DN 32 | DN 40 | DN 50

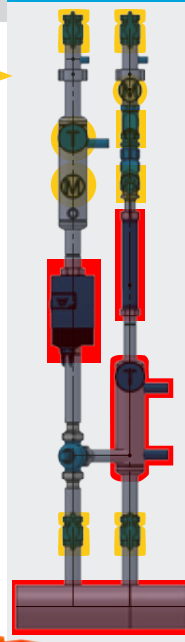
Free configuration:

- larger than DN 50, but also
- DN 25 | DN 32 | DN 40 | DN 50 with deviation from standard design

The PLANNING AFTER CREATION of the selected standard design



Premium



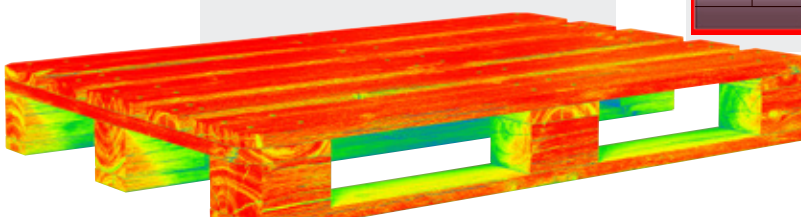
Standard

- Shut-off valve
- Thermometer
- Non-return valve
- Strainer
- Flow control valve
- Filling and drainage

Planned (according to system data)

- Circulating pump
- Control valve
- Drive for control valves
- Heat meter
- Thermal insulation*
 - Insulation EPP 50%
 - Insulation EPP 100%
- TopTronic® E, TopTronic® E-FW incl. sensor, wiring and control panel *
- Supply *
- Distributor/collector

* Not illustrated



Overview

The Excel table contains all details.

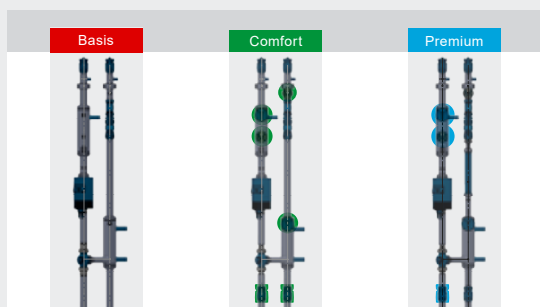
Excel table with the complete overview

Hydraulic structure equipment for one tab each for Basis - Comfort - Premium

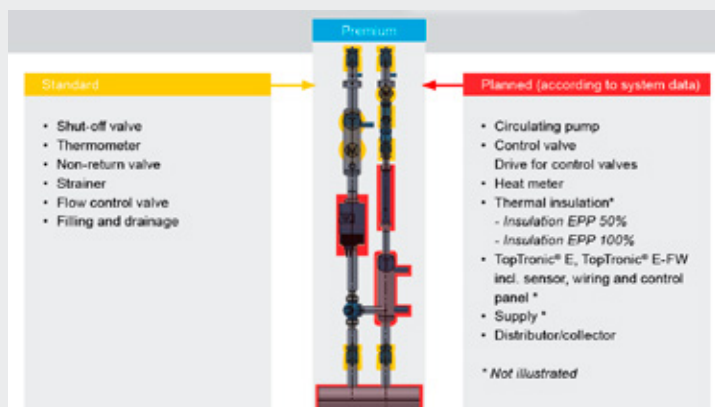
VERSIONS of the heating circuits



The STANDARD DESIGN



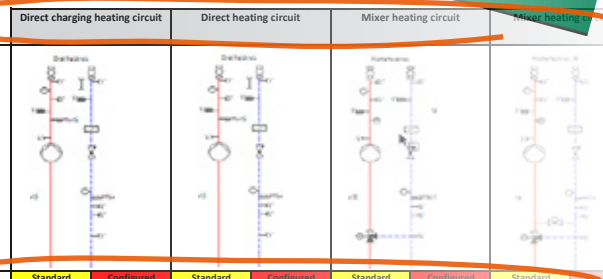
The PLANNING of the selected standard design



Excel

Heating circuit types Basis

Hydraulics



	Features			Type	Residual overpressure	Ius	Heating circuit types Basis							
	KW	Vmax	Δt				Standard	Configured	Standard	Configured	Standard	Configured	Standard	Configured
Output with HC DN (25)		2.63 m³/h												
Output with HC DN (32)		4.50 m³/h												
Output with HC DN (40)		6.83 m³/h												
Output with HC DN (50)		10.92 m³/h												
Circulating pump with HC DN (25)				Configured	according to specification									
Circulating pump with HC DN (32)				Configured	according to specification									
Circulating pump with HC DN (40)				Configured	according to specification									
Circulating pump with HC DN (50)				Configured	according to specification									
Control valve with HC DN (25)				YKG48	1.1, 2.2, 3.3, 5.5, 10, 16, 25									
Control valve with HC DN (32)				YKG48	10									
Control valve with HC DN (40)				YKG48	16									
Control valve with HC DN (50)				YKG48	25									
Control valve with ≥ HC DN (50)				Siemens VX222	Various									
Drive for control valves HC DN (25)				Various										
Drive for control valves HC DN (32)				Various										
Drive for control valves HC DN (40)				Various										
Drive for control valves HC DN (50)				Various										
Drive for control valves ≥ HC DN (50)				Various										
Heat meter for HC DN (25)				Various	0.5, 1.2, 2.2, 3.3, 5.5, 10, 16, 25									
Heat meter for HC DN (32)				Various	2.5, 3.5, 5.5, 10, 16, 25									
Heat meter for HC DN (40)				Various	3.5, 5.5, 10, 16, 25									
Heat meter for HC DN (50)				Various	5.5, 10, 16, 25									
Heat meter for ≥ HC DN (50)				Various	Various									
up to HC DN (50)														
Shut-off valve				Ball valve										
Thermometer				Bimetal 120 °C Ø 80 mm										
Non-return valve				Inclined seat										
Strainer				Inclined seat										
Flow control valve				Hydrocontrol										
Filling and drainage				Ball valve										
≥ HC DN (50)														
Shut-off valve				ARI ZESA Figure 22.012										
Thermometer				Bimetal 120 °C Ø 80 mm										
Non-return valve				RITAG SR 70.06-K										
Strainer				ARI Figure 10.050										
Flow control valve				ARI ASTRA 12.020										
Filling and drainage				Ball valve										
up to HC DN (50)														
Insulation EPP 50%														
Insulation EPP 100%														
Mineral wool with zinc sheet														
≥ HC DN (50)														
Insulation EPP 50%														
Insulation EPP 100%														
Mineral wool with zinc sheet														
Control														
Top-Tronic E, Top-Tronic E-FW incl. sensor, wiring and control panel.														
Supply														
Distributor/collector														

Basis

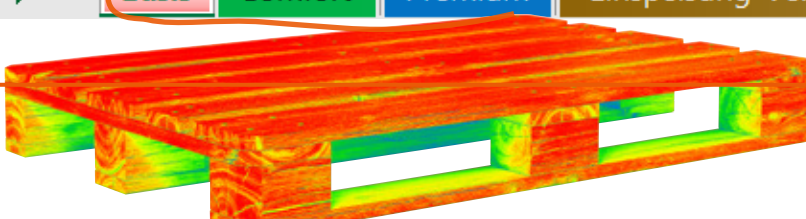
Comfort

Premium

Einspeisung-Verteiler-Sammler

Fließbild Basis

Fließ



Energy distribution in the system

Efficient and modular.

Energy efficiency

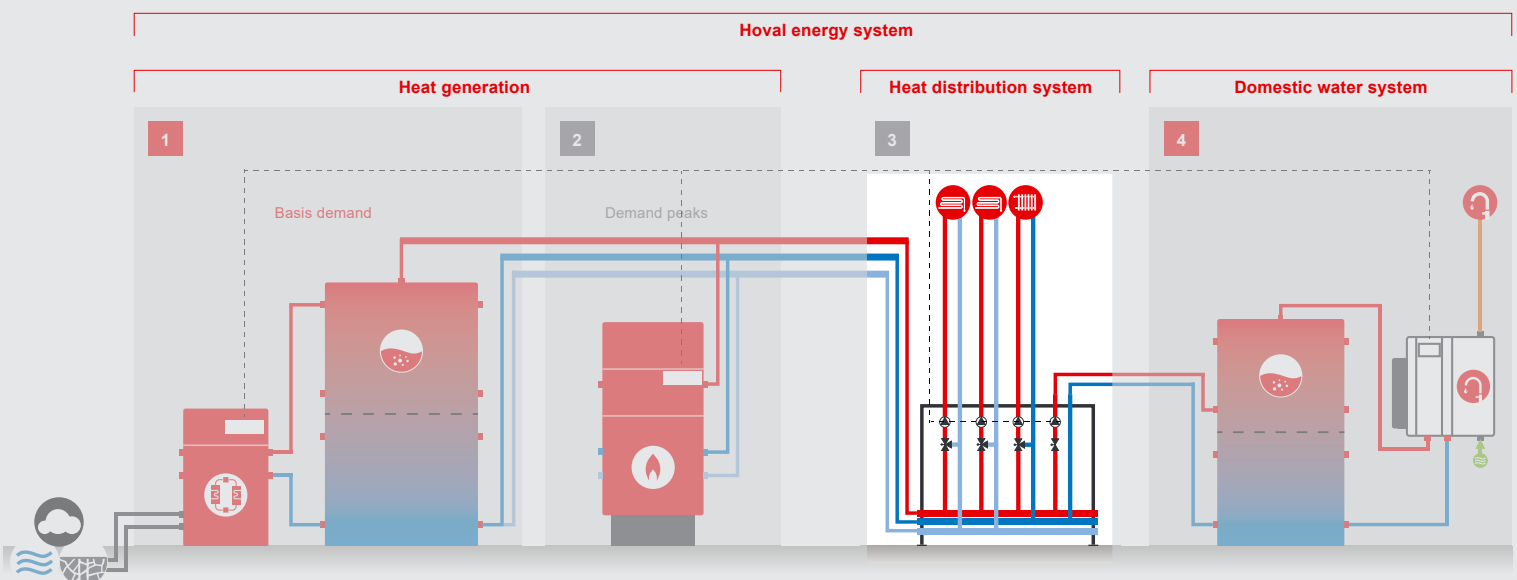
According to the Energy Efficiency Directive 2012/27/EU[1], energy efficiency is the ratio of yield (useful energy) of output, services, goods or energy to energy input (final energy). Energy efficiency is thus understood as the more rational use of energy.

Optimised processes

Optimised processes minimise quantitative and qualitative losses that occur during the conversion, transport and storage of energy. The aim of the optimisation is to achieve a given (energetic) benefit with a decreasing primary or final energy input (purchase).

Hoval energy systems

These were made up of individual modules, each of which performs a specific task. The standardised TopTronic® E control serves as the basis for virtually any combination of modules. It ensures that all modules work together optimally in the overall system. Thus, the system is more efficient than individual modules.



Standard also for the distributor

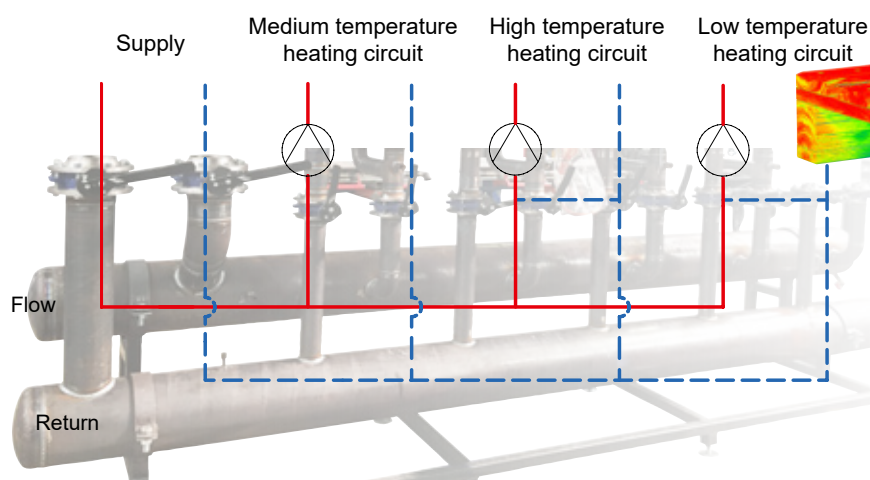
Supplying, distributing and collecting.

Classic heating circuit distributor

Pipe distributor with flow and return.

Advantage: thermal separation

It is the connection to the heating circuits



Standard design for
DN 25 | DN 32 | DN 40 | DN 50 |
DN 65 | DN 80 | DN 100 | DN 150

Supply

The heat generator supplies the heat.
It is connected to the energy distributor
through the supply, optionally on the
right, left or top.



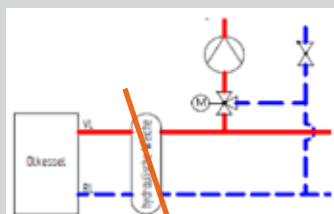
Circulating pump

Free configuration:

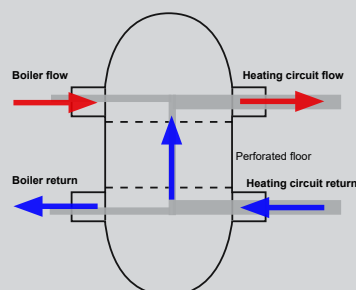
- DN 125 and larger DN 150
- Energy-efficient distributor

Hydraulic switch

Systems with condensing boilers/boilers without minimum flow rate or in a district heating system require a low return temperature (condensing effect). Since hydraulic switches raise the return temperature, they should not be installed.



Hydraulic switches are generally installed if several boilers are operating in the boiler circuit and/or on the secondary side one or more heating circuits have a higher flow rate than the boiler circuit. The switches decouple the primary boiler circuit (heat generator) and the secondary heating circuit (heat consumer). A hydraulic switch has at least four connections. Two connections are required for each integrated circuit (e.g. distribution circuit, boiler circuit, ...). Thus, the different circuits are connected to one another, but decoupled on the pressure side and thus independent of one another.



Choice of distributors

Construction and equipment individual.

Free configuration

In the case of free configuration, the equipment and the construction are customer-specific. This extends the delivery time beyond 3 weeks, and the costs are also higher.

Free configuration

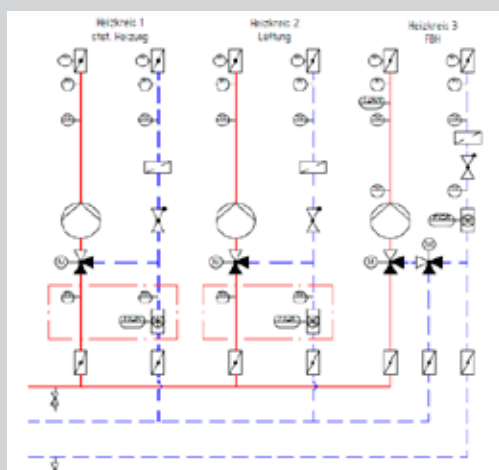
- DN 125 and larger DN 150
- DN 25 to DN 100, DN 150 with deviation from standard design, e.g. design as energy-efficient distributor

Energy-efficient distributor

The energy-efficient distributor is designed as a three-chamber distributor: flow and one return each for medium temperature and for low temperature. Accordingly, it is recommended for there to be a high or medium-temperature heating circuit and a low-temperature heating circuit. With the energy-efficient distributor, return temperatures are lower and this means higher efficiencies for condensing boilers.

The planning of energy-efficient distributor is always carried out in relation to the building, adapted to the corresponding output values, temperatures and flow rates.

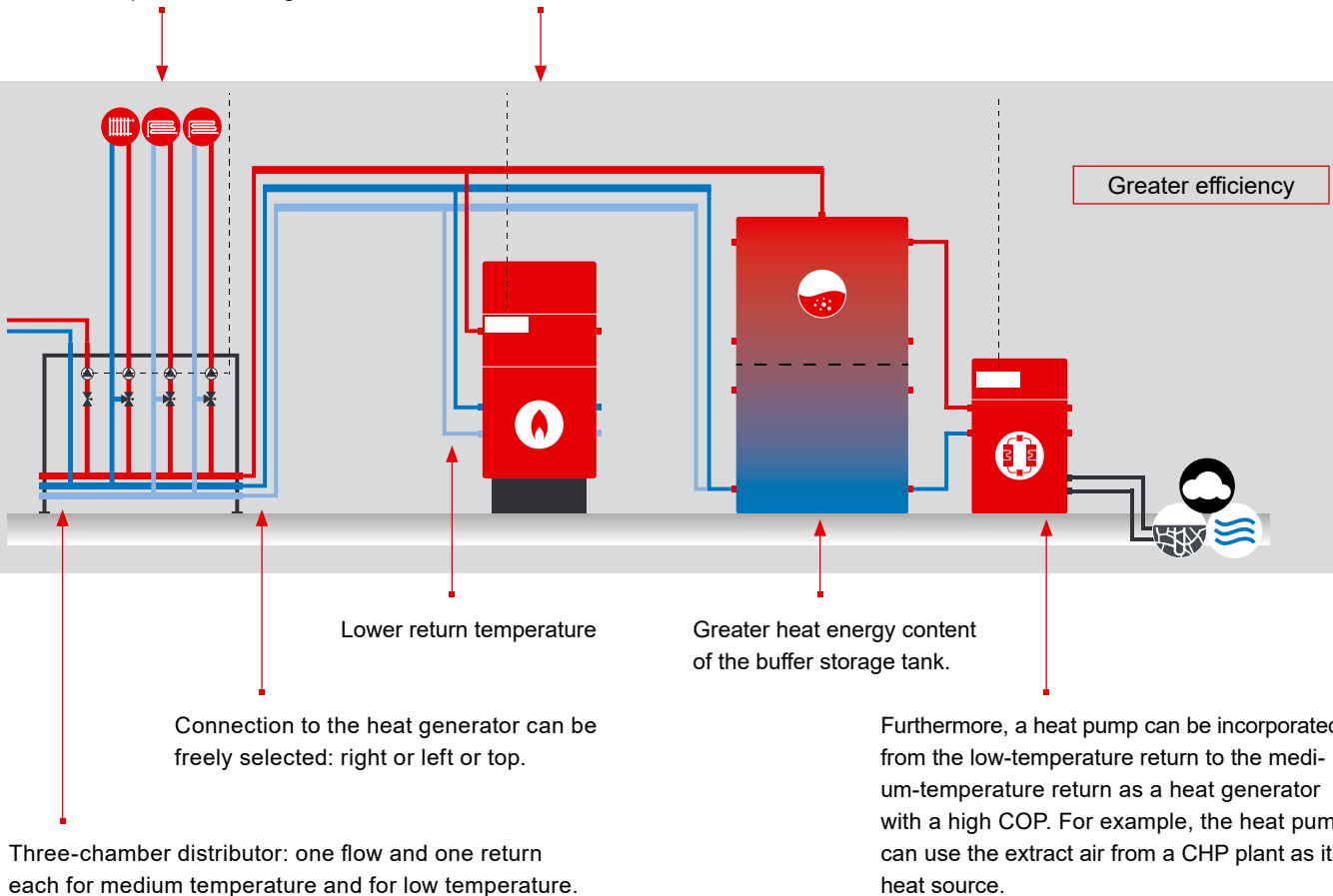
Energy-efficient distributor (EED)



- Flow distributor
- Medium-temperature return
- Low-temperature return
- Circulating pump

Greater efficiency with Hoval energy-efficient distributor

High or medium-temperature heating circuit & Condensing boilers and low-temperature heating circuit



TransShare energy-efficient distributor with UltraGas® gas condensing boiler



The medium-temperature return is used in full or in part for supplying heat to the low-temperature heating circuit flow depending on the flow rate conditions.

Return use:

- The return of the static heating (HT-return) is the flow of the panel heating
- The flow rate from the return of the panel heating (LT-return) increases
- More condensate is produced and more heat from the flue gas enters the heating water

For further information about UltraGas® 2, see **UltraGas® 2 Factbook**



Hoval TransShare

The energy distributor.



TransShare energy distributor for transferring and distributing the heat from the heat generator to/among the heat consumers. The energy distributor consists of a flow distributor, a return collector and established heating circuits. It is ready wired-up and insulated. Three standard designs can be selected: Basis, Comfort, Premium.

Range of applications: for any requirements – for new buildings and renovations.

Straightforward

Simply assemble the right distributor using a clearly defined standard design.

Fast

Order, delivery and installation: TransShare stands for speed throughout.

Precise

A suitable standard design is chosen and minimally adapted based on the individual framework conditions of a project.



Straightforward

The standard design is clearly defined and simply explained. Nevertheless, the Basis, Comfort and Premium variants offer a wide range of design options for an energy distributor that meets your requirements. Standard design means individual composition of the distributor, heating circuits in different variants with defined equipment, but with dimensions according to project specifications.

The TransShare documents and tables contain all necessary information. Enter the most important key data of your plant in the order form and send us your enquiry. The process is underway and TransShare will soon be distributing the heat in your plant as well.

Fast

The defined selection and ordering process with the associated documents and responsible persons is tightly organised. On the basis of the standard design, the order is processed accordingly quickly, without enquiries and extra cycles. The finished modules will be delivered to your desired address 3 weeks after the order is placed. The controller and electrical field devices (drives, sensors and actuators) are then wired and ready to connect. Complete preassembly minimises the amount of work involved in installation, which can proceed quickly.

Precise

The standard design, which guarantees fast delivery, defines the dimensions of the distributor to suit your plant in the second step. The system is designed and manufactured in line with the generally recognised codes of practice and is certified according to ISO 9001.

To ensure that the distributor precisely meets your requirements, you decide on the number, type and standard design of the heating circuits and the position of the feed. The dimensions can be estimated right from when the structure is determined, even if the distributor is supplied with or without an electric control panel incl. control; TopTronic® E or TopTronic® E-FW are available for selection. All that remains is to select the insulation.

Free configuration

for distributor/collector

- DN 125 and larger DN 150
- DN 25 to DN 100, DN 150 with deviation from standard design

for heating circuits

- > DN 50 or
- DN 25 to DN 50 with deviation from standard design

Designs for low-temperature application

TransShare is also available for low-temperature applications.

Ask your Hoval consultant.

More time for your core business

Satisfied customers – with the Hoval ControlBox.

The Hoval ControlBox makes controlling the entire system solution child's play. Each ControlBox is an individually planned control panel in itself and ensures efficient electrical distribution to all units. Hoval offers a well thought-out service from day one: we provide you with all the necessary documentation for the smooth connection of the ControlBox in a complete package. In addition, we guarantee that the ControlBox control equipment reliably complies with the current EN standards (EN 61439 Parts 1 and 2).



Comprehensive

Benefit from the convenient service for the Hoval ControlBox from planning and delivery to commissioning of the system solution at your customers' premises.

Reliable

With the Hoval ControlBox, you are guaranteed to be on the safe side. All components of the system are designed for perfect compatibility. The CE declaration ensures compliance with all technical and legal requirements.

Elaborate

Enjoy the convenience of a perfectly coordinated system. The comprehensible and detailed documentation of the ControlBox saves time during planning and installation.

Comprehensive planning from a single supplier

With the Hoval ControlBox, the planning, delivery and commissioning of your system solution comes from a single source – conveniently and efficiently by Hoval. Through holistic planning, time-consuming interface clarifications are eliminated, technical misunderstandings are avoided and delivery is on time. This considerably reduces the planning and implementation time for the system solution. After initial commissioning, a readjustment is carried out if necessary to take into account possible changes in operating conditions.



Reliable by testing

Security is an important factor in the success of your system solution. The ControlBox has a CE marking. This means that you can be sure that the Hoval ControlBox meets all the necessary technical and legal requirements. After internal testing and a function test, you will receive the ControlBox ready for installation. This ensures error-free commissioning and consequently the satisfaction of your customers. And for the time after that, the structured control panel layout allows the system to be retrofitted or expanded without any problems.



Ingenious and simple installation

The Hoval ControlBox includes clear and detailed documentation of the control panel with all necessary connections and terminals. This means that you can hand over important information such as circuit diagrams, cable lists and hydraulic diagrams to the electrician before the installation and concentrate on your core business. The simple construction of the control panel allows for easy wiring of the various components by the electrician afterwards. Thanks to ingenious and efficient planning, the clear documentation and the certification with the CE marking, you can expect no unexpected surprises during commissioning.

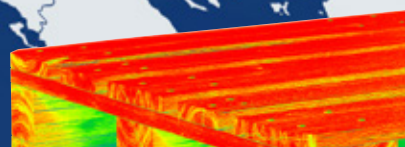


Simple connection with HovalConnect or Hoval Supervisor

The Hoval ControlBox creates the technical prerequisite for the online connection of all devices with the HovalConnect and HovalSupervisor operating platforms – simply via your web browser, without any software at all.

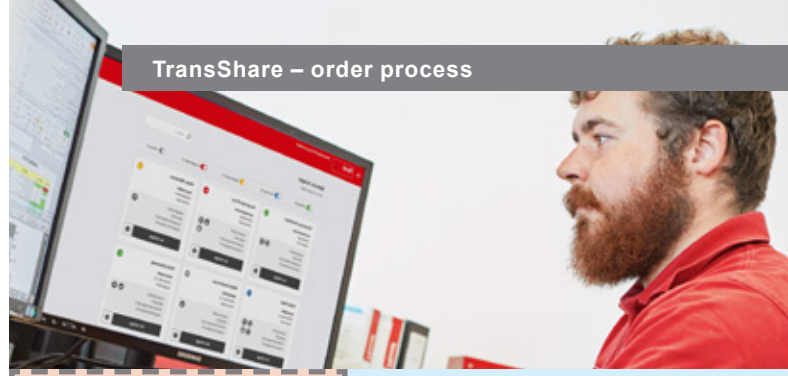
Order fulfilment

Tools and forms.





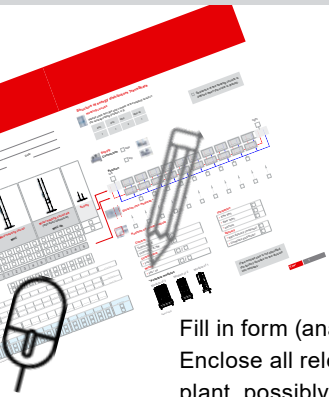
Interested party/customer with Hoval consultant



TransShare – order process

Hoval in-house service
If present!

Yados



Fill in form (analogue/digital)
Enclose all relevant data for the
plant, possibly hydraulic diagrams

Offer request

Send by e-mail



cc: Hoval consultant

angebot.hoval@yados.de

Fine planning according to
plant specifications

Quotation

With piping and installation diagram
and description of services



cc: Hoval consultant

Orders



cc: Hoval consultant

auftrag.hoval@yados.de

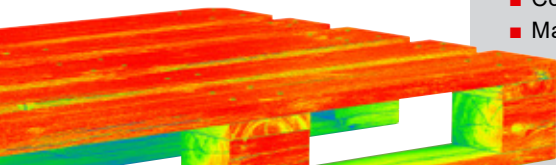
Order confirmation

Order confirmation with technical specifications



Delivery

- Delivery to construction site or into the warehouse
- Product documentation including spare part list
- Commissioning by Hoval if required
- Maintenance by Hoval if required



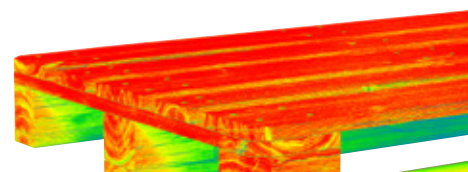
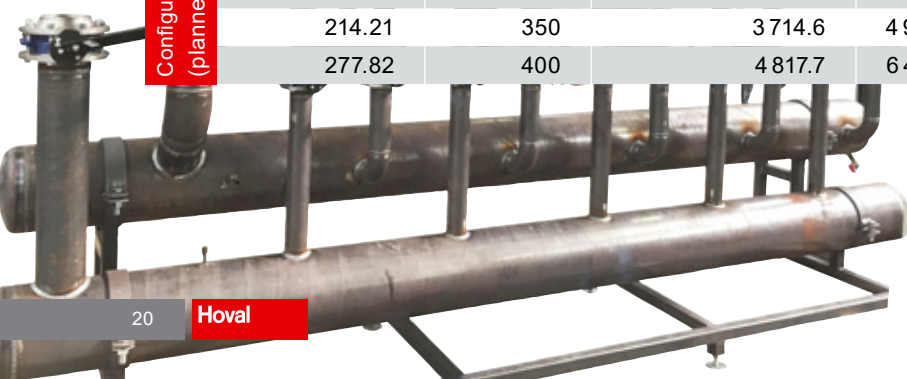
Technical facts

Selection and dimensions.

TransShare distributor

Flow rate nominal diameter ΔT output at max. 0.65 m/s

	Flow rate V [m³/h]	Distributor DN	Max. output at ΔT 15K [kW]	ΔT 20K [kW]	ΔT 25K [kW]	ΔT 30K [kW]	ΔT 40K [kW]
Standard	1.49	25	25.8	34.5	43.1	51.7	68.9
	2.54	32	44.0	58.7	73.4	88.1	117.5
	3.41	40	59.1	78.8	98.6	118.3	157.7
	5.46	50	94.7	126.2	157.8	189.4	252.5
	9.08	65	157.5	209.9	262.4	314.9	419.9
	12.51	80	216.9	289.2	361.6	433.9	578.5
	21.08	100	365.5	487.4	609.2	731.1	974.8
Configurable (planned)	31.88	125	552.8	737.1	921.4	1 105.7	1 474.2
	46.64	150	808.8	1 078.4	1 348.0	1 617.6	2 156.8
	78.37	200	1 359.0	1 812.0	2 265.0	2 718.0	3 624.0
	124.62	250	2 161.0	2 881.4	3 601.7	4 322.1	5 762.8
	176.27	300	3 056.7	4 075.6	5 094.5	6 113.4	8 151.2
	214.21	350	3 714.6	4 952.8	6 191.0	7 429.2	9 905.7
	277.82	400	4 817.7	6 423.6	8 029.5	9 635.4	12 847.2



Max. number of heating circuits in standard design

with supply - distributor - collector....

DN 100

Heating circuit	DN 25	DN 32	DN 40	DN 50
Max. number of heating circuits	10 *	8 *	6 *	4 *

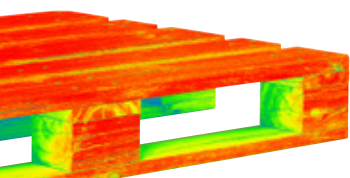
DN 150

Heating circuit	DN 25	DN 32	DN 40	DN 50
Max. number of heating circuits	20 *	16 *	12 *	8 *

* Depending on generator flow rate

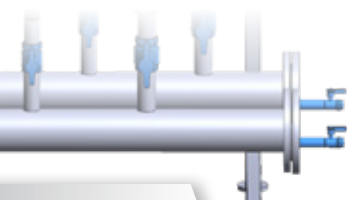
TransShare heating circuitsFlow rate nominal diameter ΔT output at max. 1.3 m/s

	Flow rate V [m³/h]	Distributor DN	Max. output at ΔT 7K [kW]	ΔT 10K [kW]	ΔT 15K [kW]	ΔT 20K [kW]	ΔT 25K [kW]
Standard	1.35	20	10.9	15.6	23.4	31.2	39.0
	2.63	25	21.0	30.0	46.0	61.0	76.0
	5.09	32	41.0	59.0	88.0	118.0	147.0
	6.83	40	55.0	79.0	118.0	158.0	197.0
	10.92	50	88.0	126.0	189.0	252.0	316.0
Configurable (planned)	18.17	65	147.0	210.0	315.0	420.0	525.0
	25.02	80	202.0	289.0	434.0	578.0	723.0
	42.16	100	341.0	487.0	731.0	975.0	1 218.0
	63.75	125	516.0	737.0	1 105.0	1 474.0	1 842.0
	93.28	150	755.0	1 078.0	1 618.0	2 157.0	2 696.0
	153.74	200	1 244.0	1 777.0	2 666.0	3 555.0	4 443.0
	249.24	250	2 017.0	2 881.0	4 322.0	5 763.0	7 203.0



Dimensions

Standard design.



Distributor/
collector
DN 100
DN 150

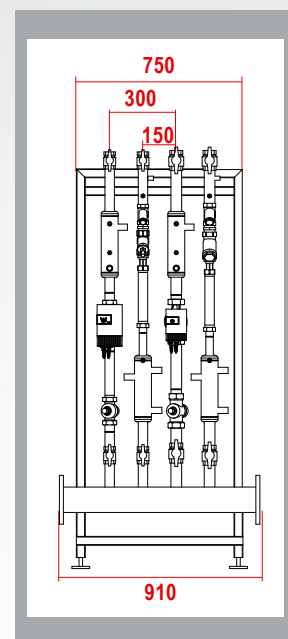
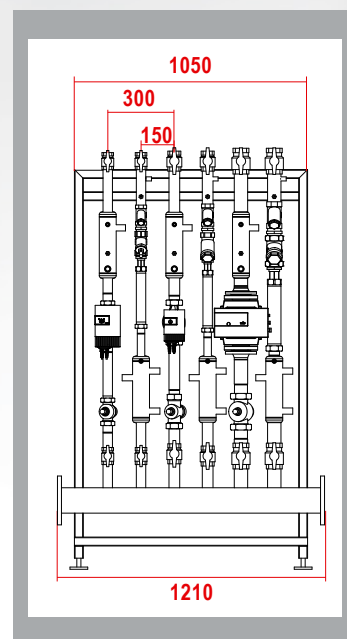
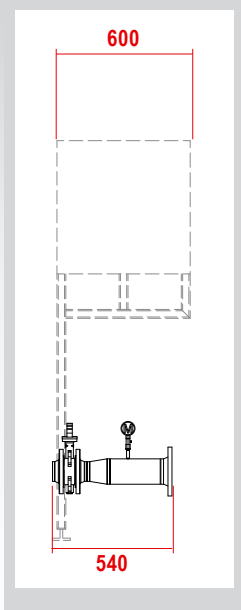
Supply
Left

ControlBox (optional)
Left

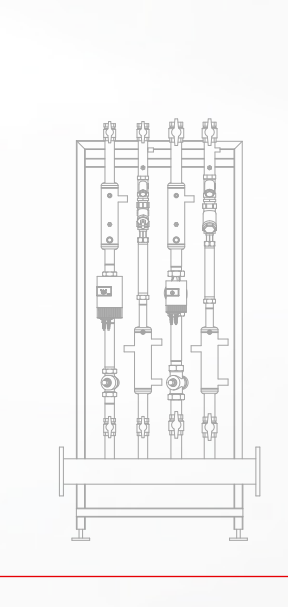
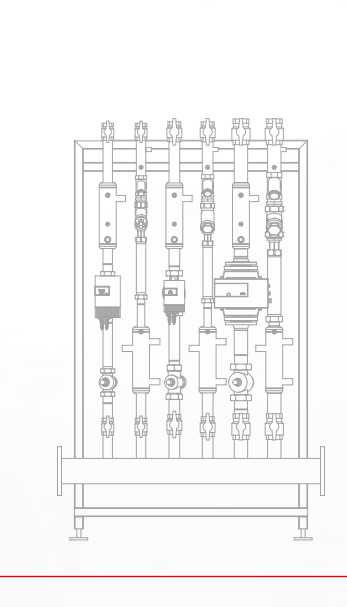
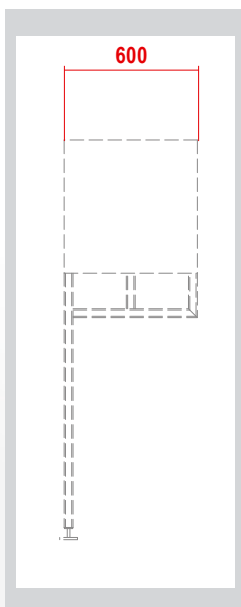
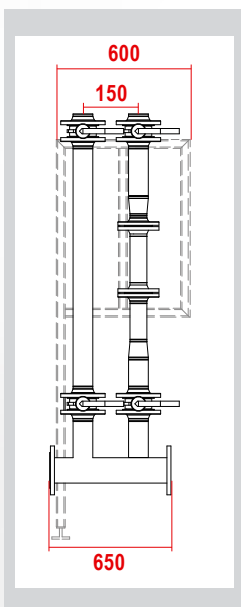
Module of 3

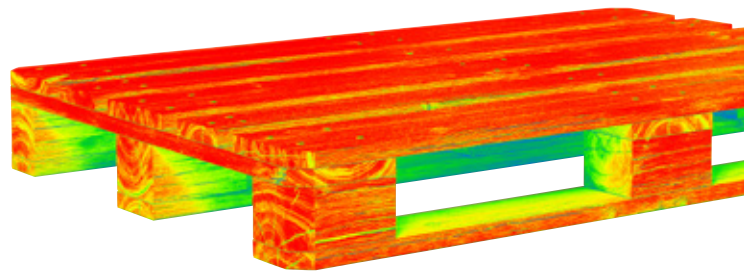
Module of 2

side



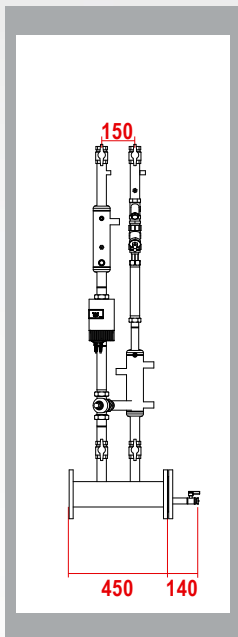
Top



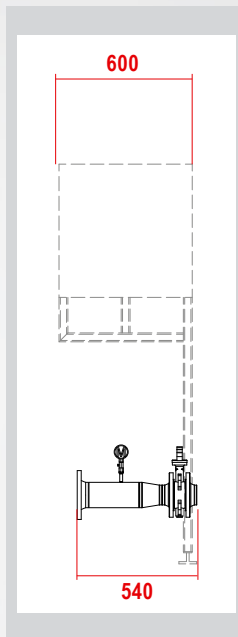


The modules are supplied pre-wired.

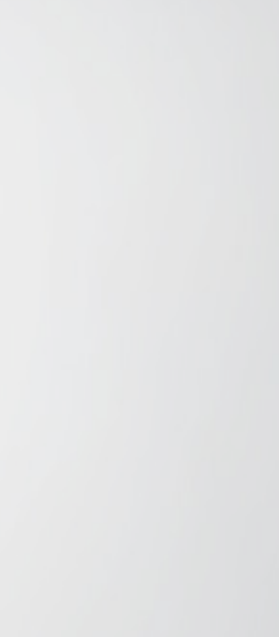
Module of 1



Supply Right

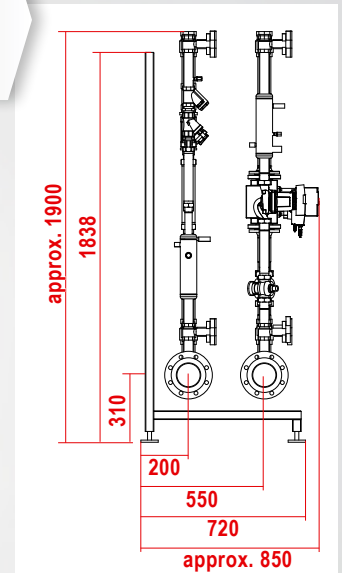


ControlBox (optional) Right



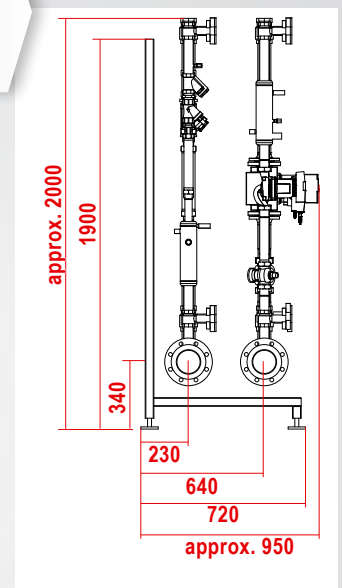
Distributor/
collector

DN 100



Distributor/
collector

DN 150



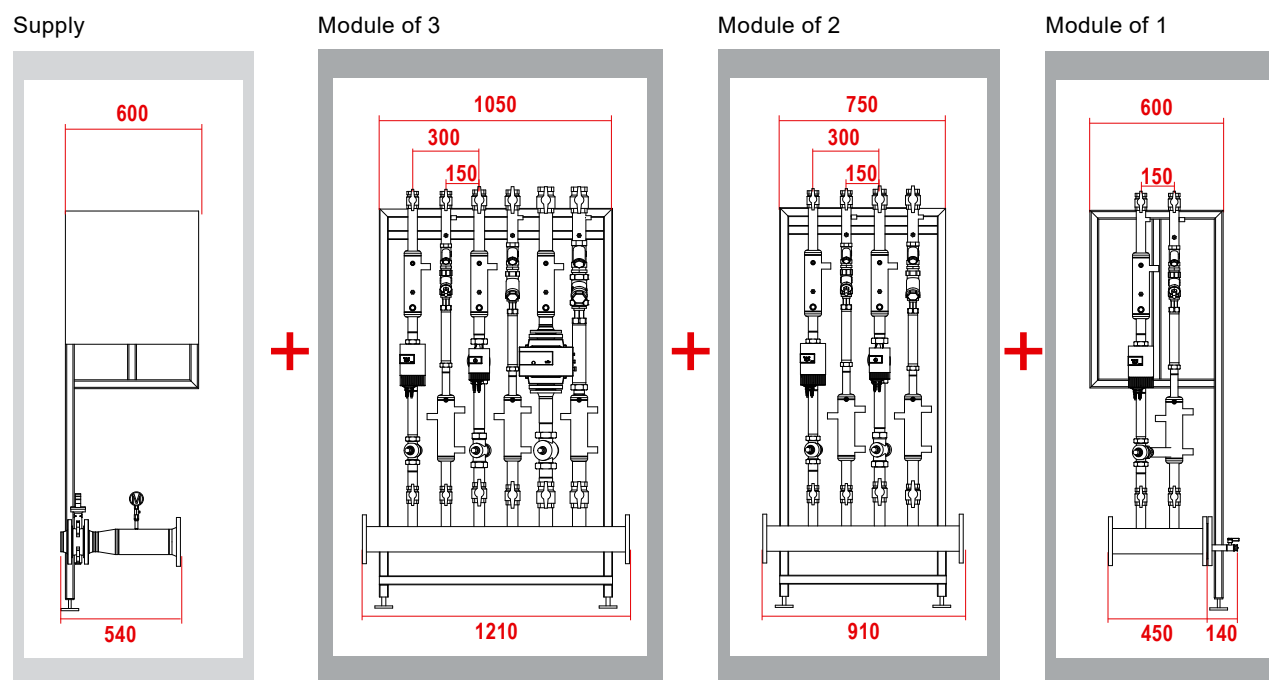
TransShare - module for module

Examples of the construction.

Example 1

TransShare 1E-6H

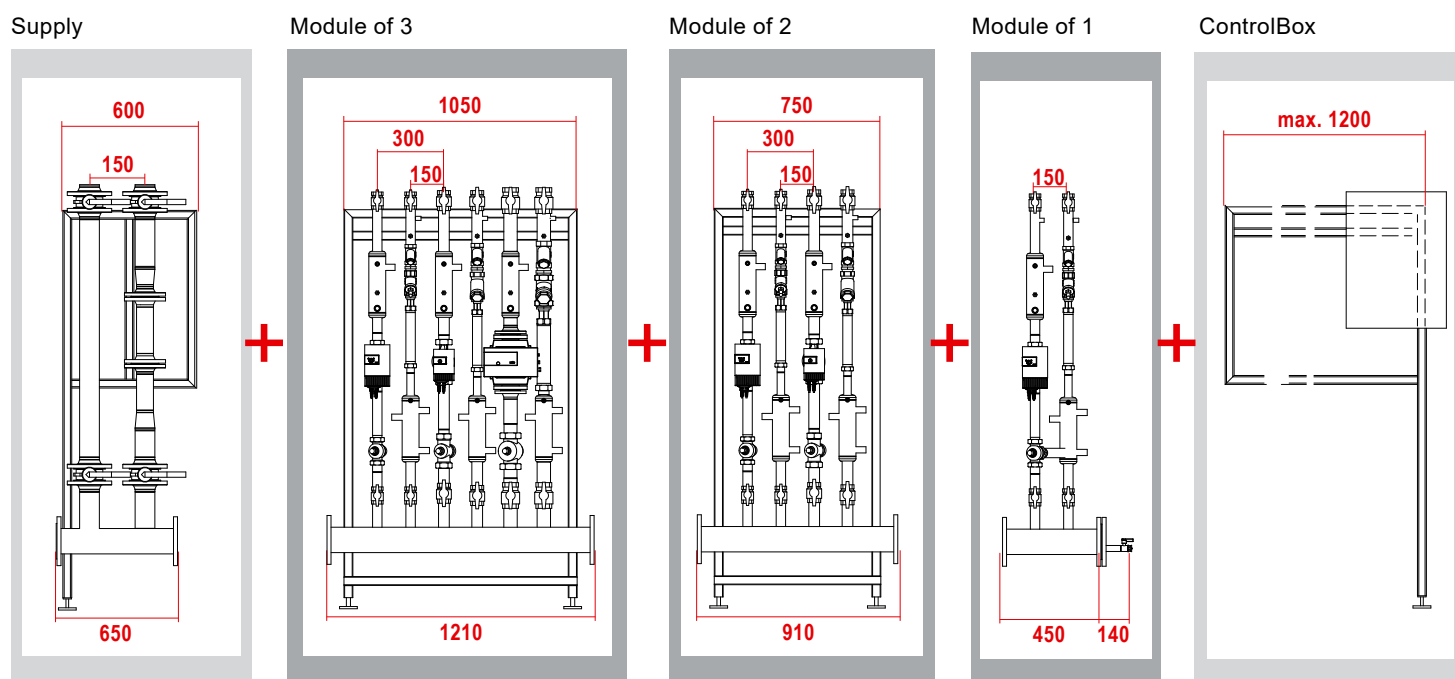
Supply side left, 6 heating circuits incl. control



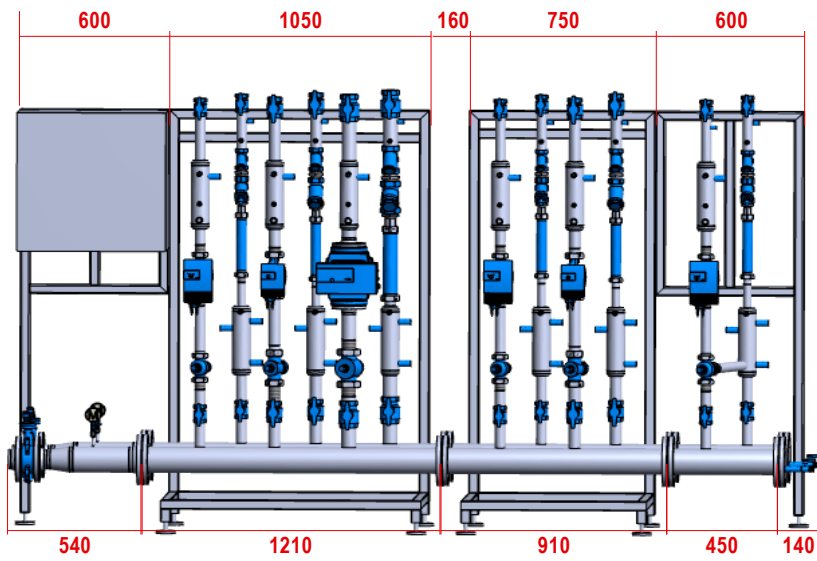
Example 2

TransShare 1E-6H

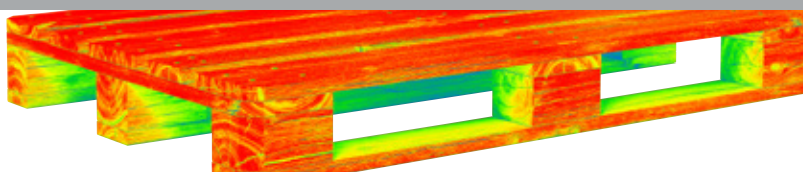
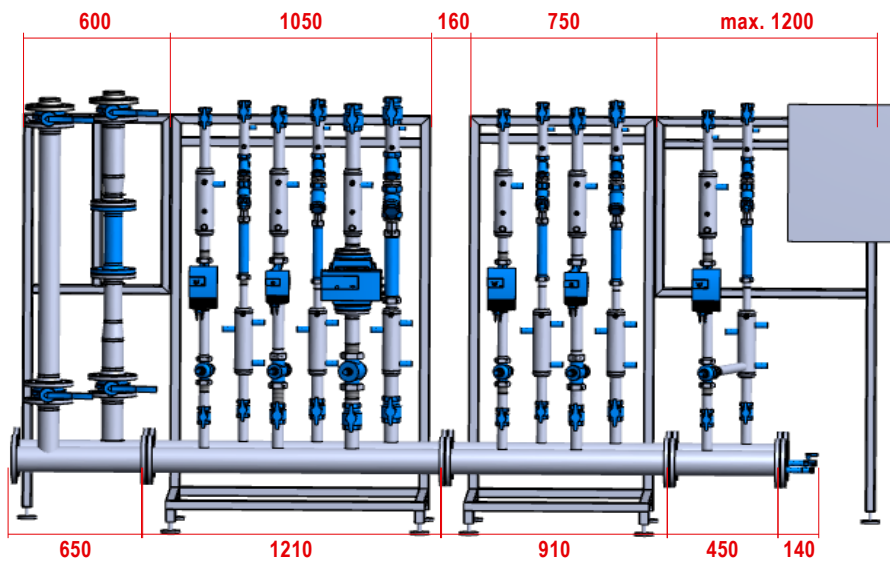
Supply top left, 6 heating circuits incl. control



==



==



Already in use
Diverse applications.

Application areas of the TransShare energy distributor

The concept of the standard design offers many possibilities for the design/equipment of the TransShare energy distributor. The areas of application for TransShare are correspondingly diverse. Whether hotel, apartment building or heating centre, the TransShare energy distributor is the right solution!



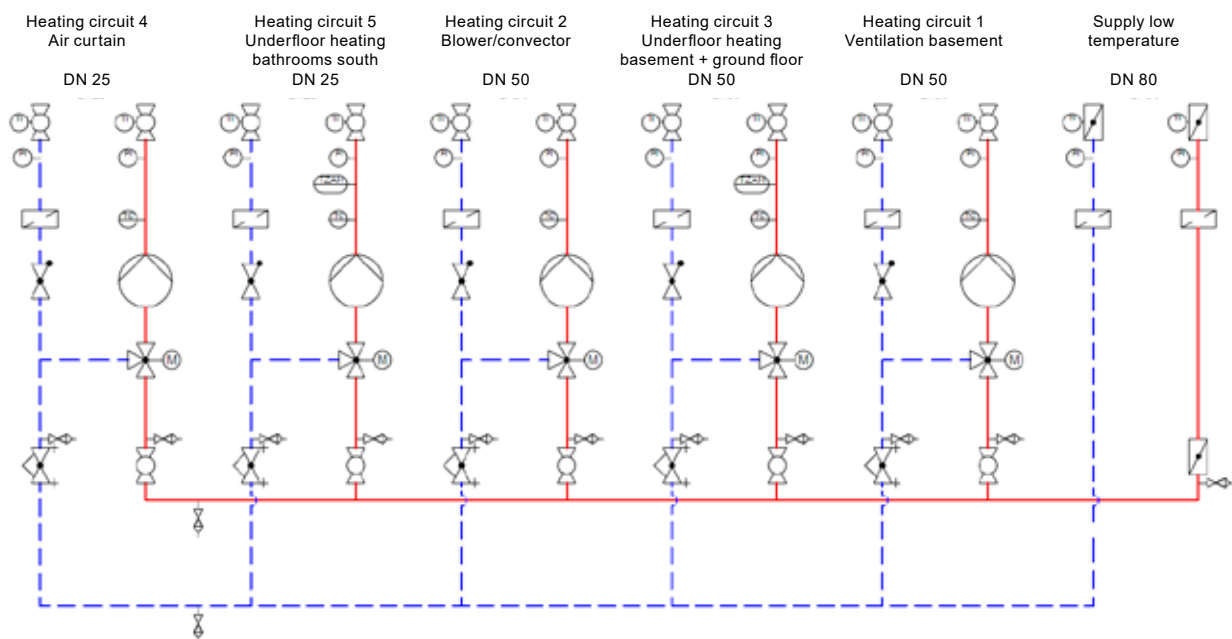


Use in a hotel

TransShare 1E-5H

202 kW

Control TopTronic® E-FW

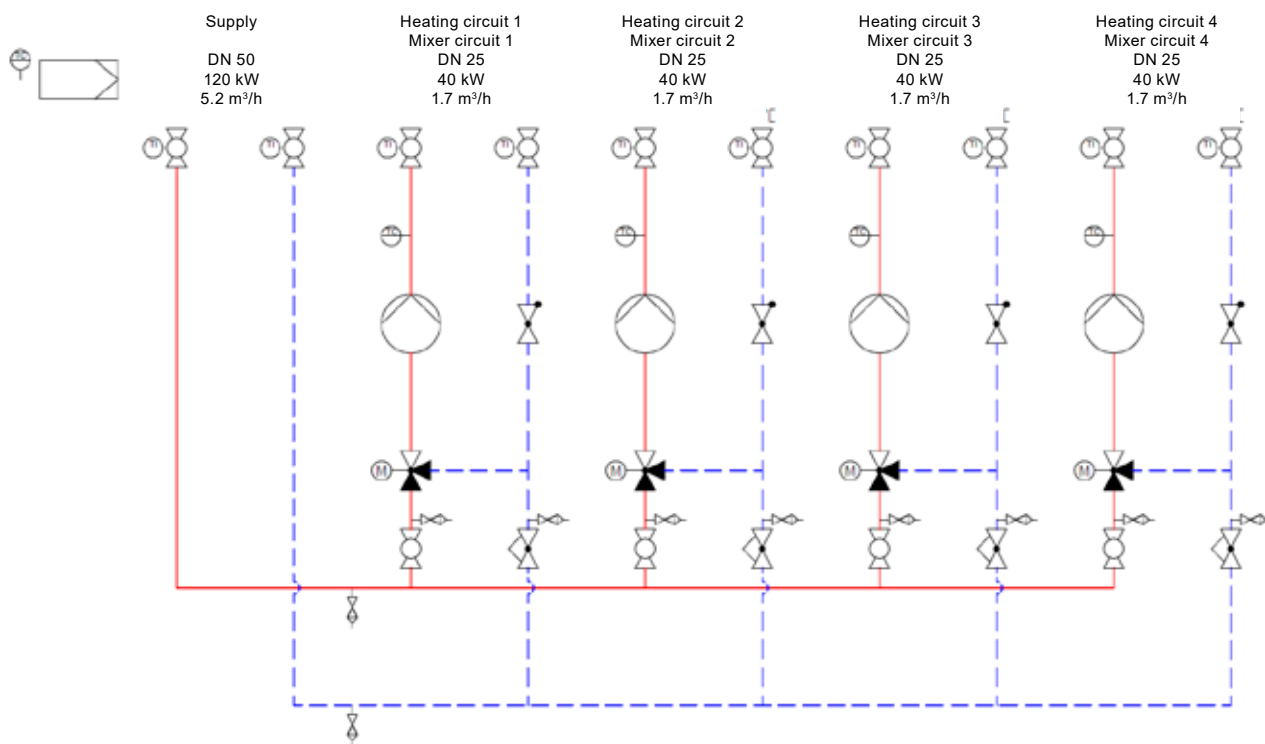


Use in multi-family home

TransShare 1E-4H

120 kW

TopTronic® E controller



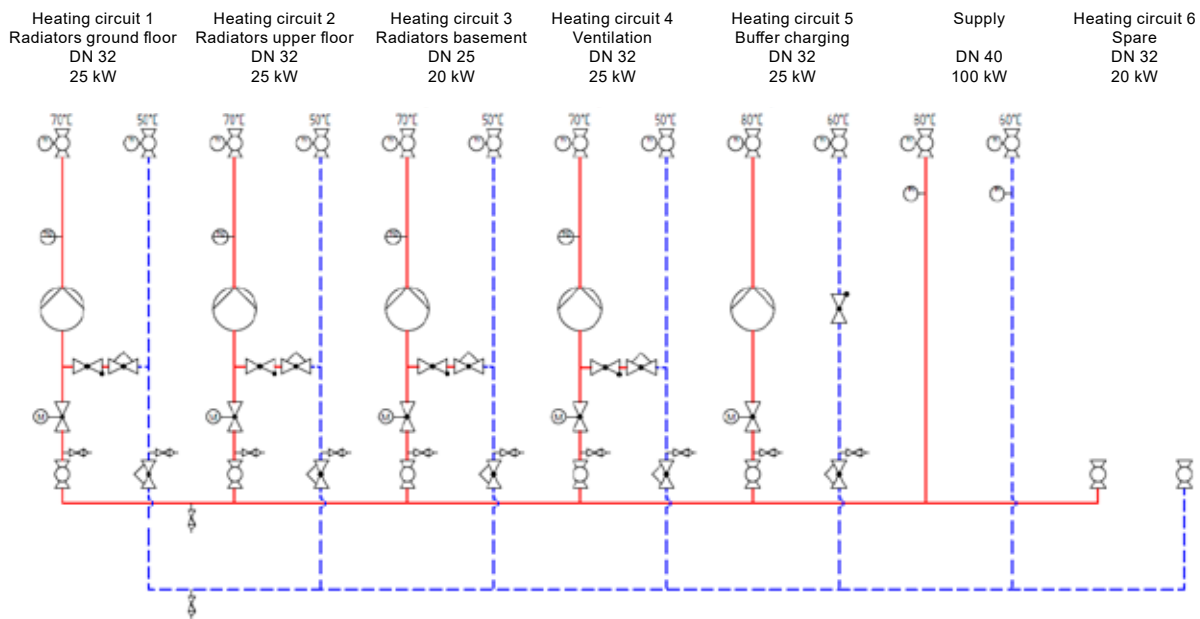


Use in an office building

TransShare 1E-6H

100 kW

Control TopTronic® E-FW



A glance to the right and left

The market in focus.



Hoval TransShare energy distributor

Ready-to-install unit delivered in 3 weeks.

Ready-to-collect hydraulics | Electrically wired up | Incl. thermal insulation

Delivery time



With/without switch control box and control

TopTronic® E or TopTronic® E-FW

Wiring ready to connect

Charging circuits and heating circuits in three standard designs Basis, Comfort, Premium

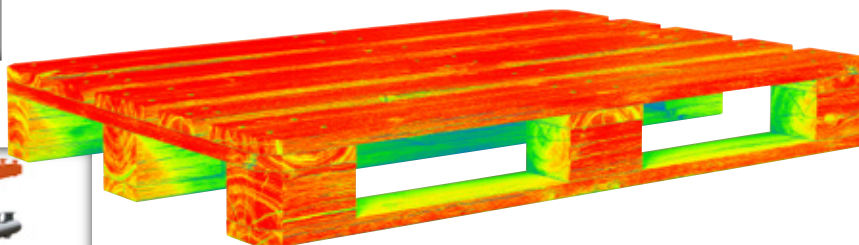
Insulation can be selected 50% or 100%

Supply can be selected right or left side or top

Efficient thermally insulated distributor and collector 2-chamber distributor



Stand-alone unit by mounting on a frame



Hoval quality. You can count on us.

As a specialist in heating and climate technology, Hoval is your experienced partner for system solutions. For example, you can heat water with the sun's energy and your rooms with oil, gas, wood or a heat pump. Hoval ties together the various technologies and also integrates room ventilation into the system. You can be sure to save both energy and costs while protecting the environment.

Hoval is one of the leading international companies for indoor climate solutions. More than 75 years of experience continuously motivates us to design innovative system solutions. We export complete systems for heating, cooling and ventilation to more than 50 countries.

We take our responsibility for the environment seriously. Energy efficiency is at the heart of the heating and ventilation systems we design and develop.

Responsibility for energy and environment

Germany

Hoval GmbH
85609 Aschheim-Dornach
hoval.de

Austria

Hoval Gesellschaft m.b.H.
4614 Marchtrenk
hoval.at

Switzerland

Hoval AG
8706 Feldmeilen
hoval.ch



Hoval Aktiengesellschaft | Austrasse 70 | 9490 Vaduz | hoval.com

Your Hoval partner

Hoval